



ASPIRE RESIDENTIAL

Service | Expertise | Accountability



Western Road, Lancing, BN15 9UB

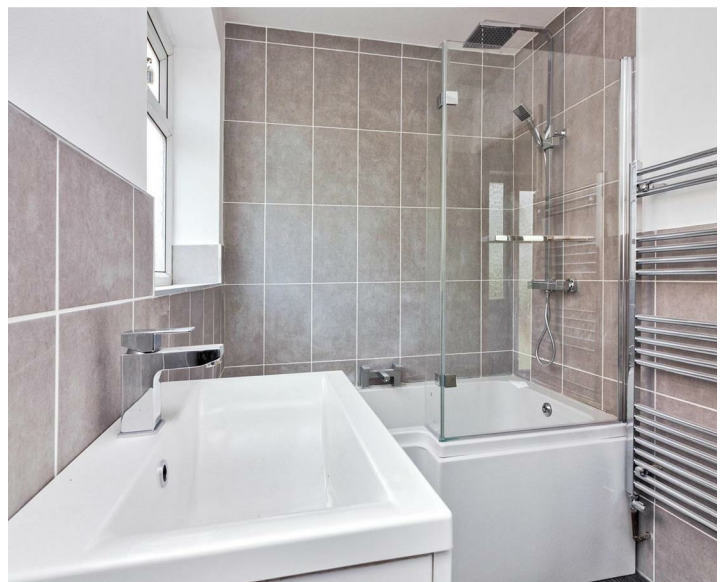
£1,550 PCM

Aspire Residential is delighted to offer a refurbished semi-detached house situated in Sompting. The property comprises two double bedrooms, newly fitted kitchen with appliances, living/dining room, newly fitted bathroom, off road parking, front & rear gardens. The property is unfurnished and available now.




Council Tax Band: C

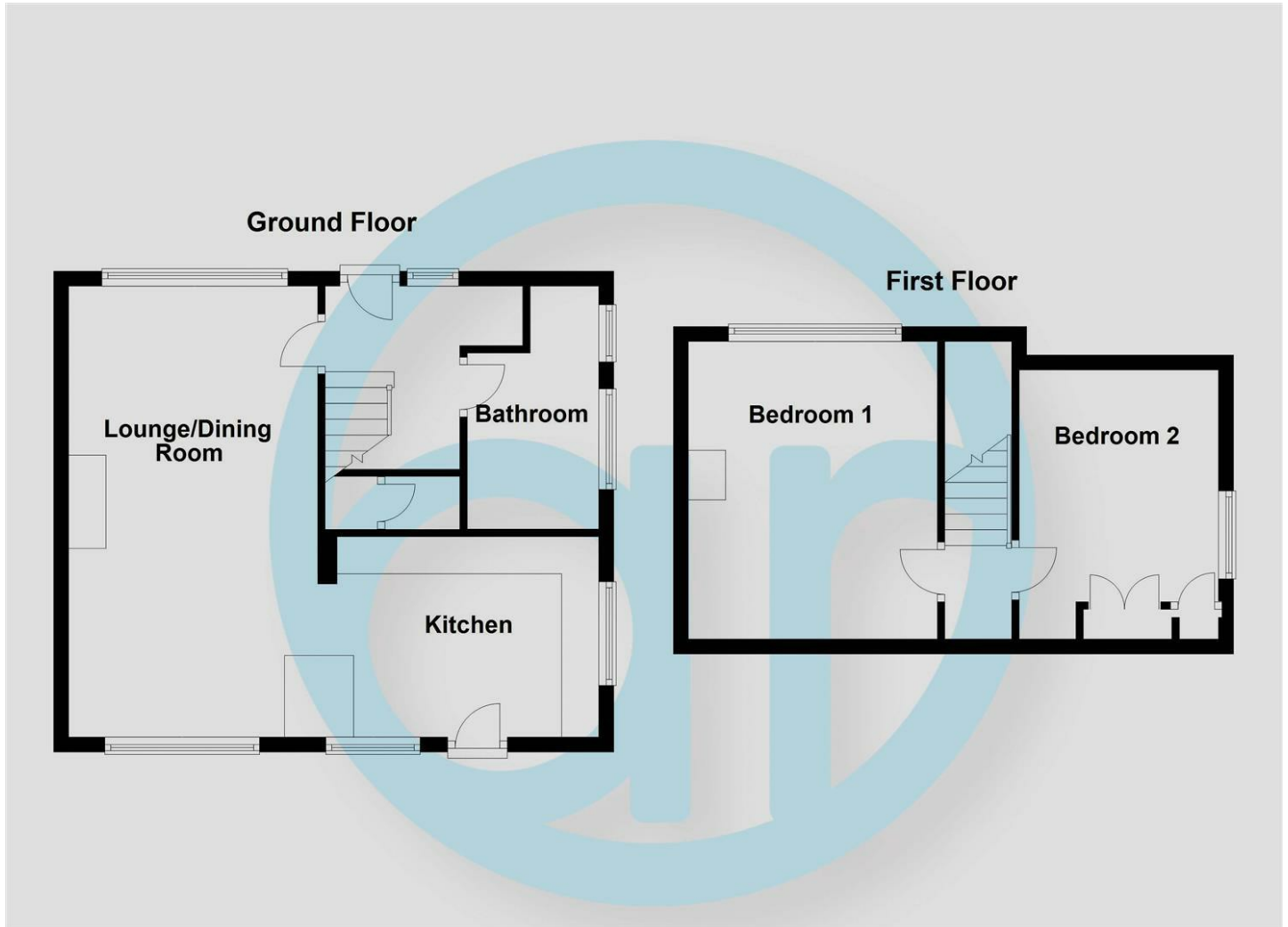
- Modern Semi-Detached House
- Living/Dining Room
- Refitted Bathroom
- Off Road Parking
- Available Now
- Two Double Bedrooms
- Modern Kitchen with Appliances
- EPC Rating E - Old rating pre refurb
- Unfurnished





EPC Rating:

Energy Efficiency Rating		
	Current	Potential
Very energy efficient - lower running costs		
(92 plus) A		
(81-91) B		
(69-80) C		
(55-68) D		
(39-54) E		
(21-38) F		
(1-20) G		
Not energy efficient - higher running costs		
England & Wales	EU Directive 2002/91/EC 	



Aspire Residential | Goring-by-Sea

28 Goring Road
Goring-by-Sea
Worthing
BN12 4AD
Telephone: 01903 259 961
Email: info@aspireresidential.co.uk



Aspire Residential | Durrington / Salvington

5 Selden Parade
Salvington Road
Worthing
BN13 2HL
Telephone: 01903 910 424
Email: enquiries@aspireresidential.co.uk

Aspire Residential and Aspire Residential Estate Agents are trading names of Aspire Residential Sales Limited, a Company registered in England and Wales with registration number 11659289. VAT No. 317450614

IMPORTANT NOTICE TO PURCHASERS: We endeavour to make our sales particulars accurate and reliable, however, they do not constitute or form part of an offer or any contract and none is to be relied upon as statements of representation or fact. The services, systems and appliances listed in this specification have not been tested by us and no guarantees as to their operating ability or efficiency are given. All measurements have been taken as a guide to prospective buyers only, and are not precise. If you require clarification or further information on any points, please contact us, especially if you are traveling some distance to view.